



# SOCIAL INNOVATION AT GW

2025 GWUPSTART SHOWCASE PRESENTATIONS

**GW**  
**UPSTART**

THE HONEY W. NASHMAN  
CENTER FOR CIVIC  
ENGAGEMENT AND  
PUBLIC SERVICE



# NASHMAN CIVIC **SPOTLiGHTS**

2024-2025 Knapp Fellowship  
Riley Lima



Honey W. Nashman Center  
for Civic Engagement  
and Public Service

**MARCH 28, 2025**



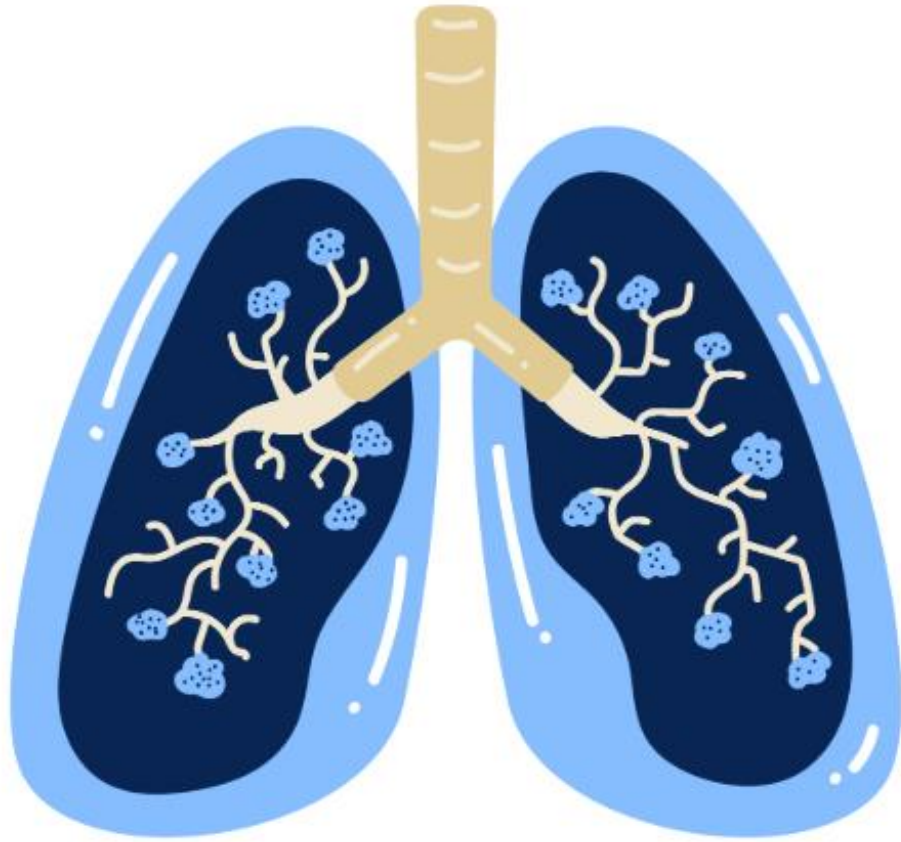
# My Knapp Experience



**Riley Lima, B.S. Candidate in  
Public Health**

2024-2025 Knapp Fellow  
Emergency Department  
Technician, GWUH





**TW:** Heavy topics including death of children and racial disparities.

## Case Study

A teenage patient suffered:

- Asthma attack → respiratory distress → respiratory failure → cardiac arrest

In the ambulance & hospital:

- successful resuscitation → ECMO → ICU care

This outcome was **preventable**: the patient ran out of albuterol prior to ED visit and could not refill due to finances & a lack of insurance.



# School-Based Asthma Telehealth (SAT) Intervention & Research Study

Riley Lima, Dr. Maranda C. Ward, Ed.D., M.P.H., Shilpa J. Patel, M.D., M.P.H.

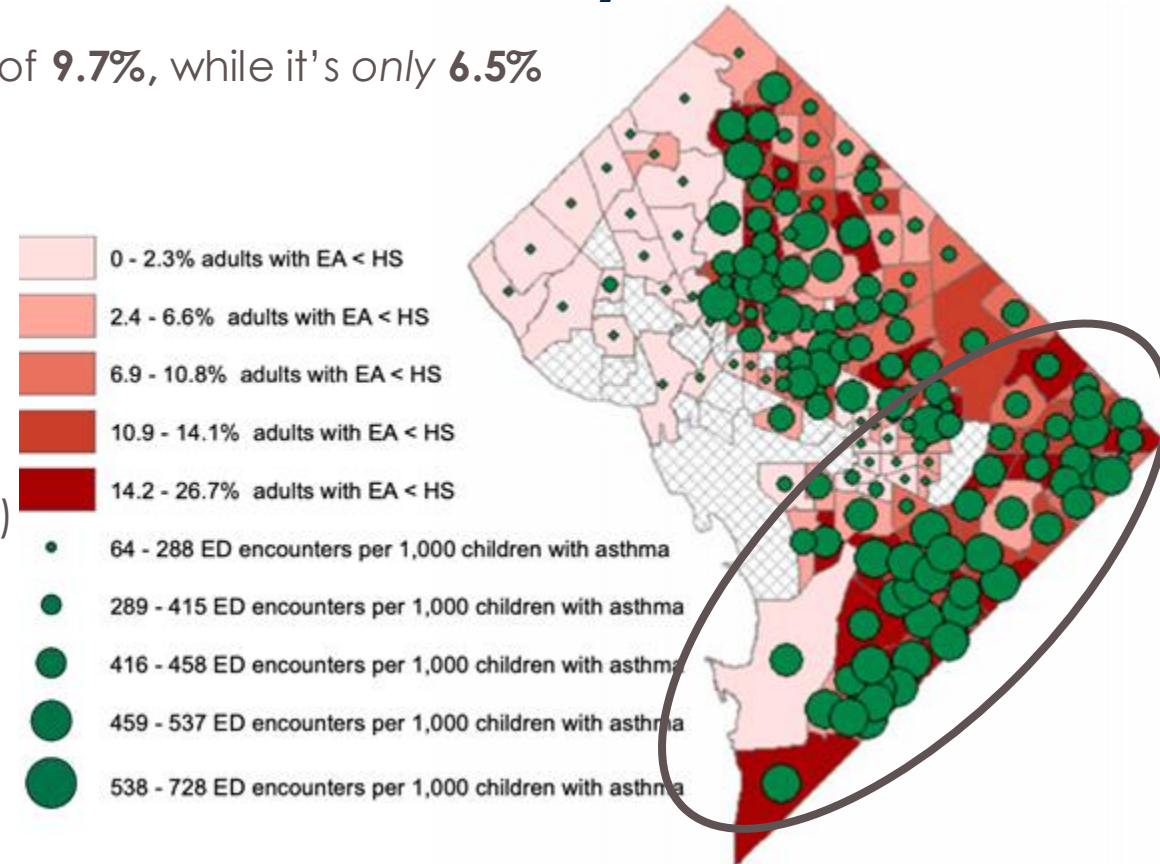


## DC Asthma Disparities & Morbidity

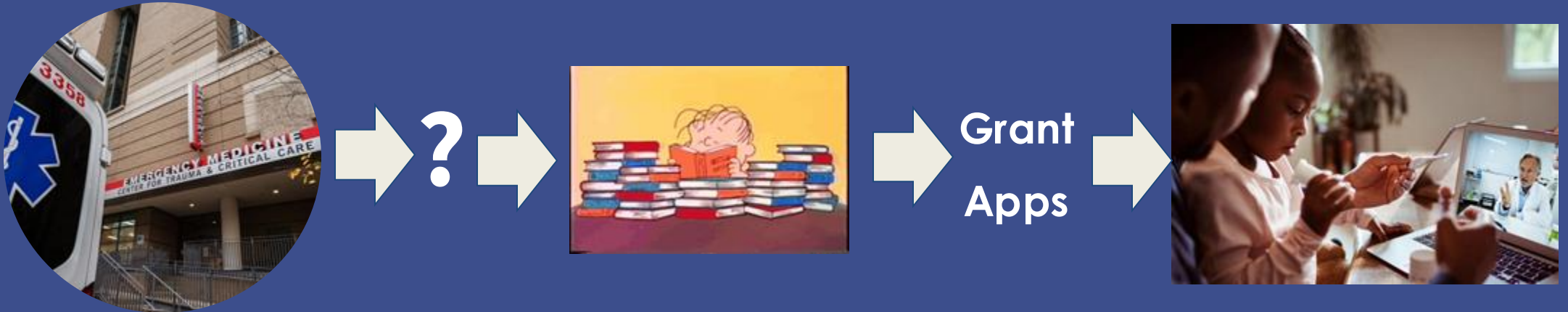
- Childhood asthma in DC has a prevalence rate of **9.7%**, while it's only **6.5%** nationally (CDC BRFSS, 2021)
- Pediatric patients from Wards 7 and 8 are **10x more likely** to be hospitalized for asthma than those residing in NW quadrant (IMPACT DC).

Geospatial analysis: ↓ **educational attainment** is associated with ↑ **ED visit at-risk rates** (Tyriss, et al., 2022)

**Educational attainment** plays an important role as a SDOH by shaping opportunities for **employment** (and therefore **insurance status**) & **income** (The Lancet, 2020)



## Why is this Case Relevant?



This case was my first exposure to the disparity. The actions afterward are how you *could* use your PH degree to help design/fund interventions! A project does not have to start at the lit review.

# Importance of Community Based Organizations

We have partnered with safety net clinic, IMPACT DC, to combat these disparities.

## How IMPACT DC functions as a Safety Net

- Prompt physician visit after ED discharge
- Temporary prescriptions
- A reduction in school absences → directly addresses the SDOH, educational attainment

IMPACT DC's in-person model of care was **validated** in a prospective randomized clinical trial, published in the Archives of Pediatrics and Adolescent Medicine (2006). The study achieved several clinically and statistically significant outcomes.

It is important that we partner with them because they are trusted and are *already* delivering care to the target population!



**How could we enhance the quality of asthma care for  
populations experiencing disparities?**

## Telehealth Intervention & Evaluation

The telehealth visits will operate like regular IMPACT DC visits– but with a twist– the clinic will meet 30 additional patients and their parents/guardians **virtually**

- Since telehealth is convenient and overall low-cost for patients → visits are projected significantly raise the attendance rate
- Asthma Educator role added to help facilitate online visits with the clinic

# School-Based Asthma Telehealth (SAT) Intervention & Research Study

Riley Lima, Dr. Maranda C. Ward, Ed.D., M.P.H., Shilpa J. Patel, M.D., M.P.H.

THE GEORGE  
WASHINGTON  
UNIVERSITY  
WASHINGTON, DC



## About Us



**Shilpa J. Patel, M.D., M.P.H.**

Medical Director, IMPACT  
DC Asthma Clinic &  
Emergency Medicine  
Physician, Children's  
National



**Dr. Maranda C. Ward, Ed.D.**

Assistant Professor &  
Director of Equity,  
Department of Clinical  
Research, GW SMHS; 2016-  
2017 Knapp Fellow;



**Riley Lima, B.S. Candidate  
in Public Health**

Emergency Department  
Technician, GWUH & 2023-  
2024 Eco-Equity Grant  
Recipient

12:29

Q1. Are you usually the person who makes health care decisions, or participates in health care decisions?

Yes ☐

No ☐

Q3. How old is your child that visited IMPACT DC?

Q4. Is this child male or female?

# Telehealth Intervention & Evaluation

## How will we measure effectiveness?

We will track markers of poorly controlled asthma through survey data collected from the participant's parents:

- ER readmission
- Missed school days

A significant ↓ in missed school days and ER readmission will indicate that our intervention is good quality– the opposite will identify areas for improvement.



# Future Updates + Acknowledgments

**Stay tuned: data analysis will be presented at GW Research Day!**

This project would not be possible without the funding and support of the Nashman Center.

If there is any interest in GW grant funding or the Knapp Fellowship specifically, please refer to the Nashman Center's website.



Honey W. Nashman Center  
for Civic Engagement  
and Public Service

**Any Questions?**

## References

CDC BRFSS. (2021). 2021 Asthma Data: BRFSS Prevalence Tables and Maps. Retrieved from <https://www.cdc.gov/asthma/brfss/2021/default.html>.

Jordan Tyris, Anand Gourishankar, Maranda C. Ward, Nikita Kachroo, Stephen J. Teach, Kavita Parikh; Social Determinants of Health and At-Risk Rates for Pediatric Asthma Morbidity. *Pediatrics* August 2022; 150 (2): e2021055570. 10.1542/peds.2021-055570

National Heart Lung and Blood Institute (2023) Asthma in the Black Community Fact Sheet. Retrieved from <https://www.nhlbi.nih.gov/resources/asthma-black-community-fact-sheet>.

The Lancet Public Health (2020). Education: a neglected social determinant of health. *The Lancet. Public health*, 5(7), e361. [https://doi.org/10.1016/S2468-2667\(20\)30144-4](https://doi.org/10.1016/S2468-2667(20)30144-4)



# NASHMAN CIVIC **SPOTLiGHTS**

**2024-2025 Knapp  
Fellowship Recipient:  
TRANS-Care**



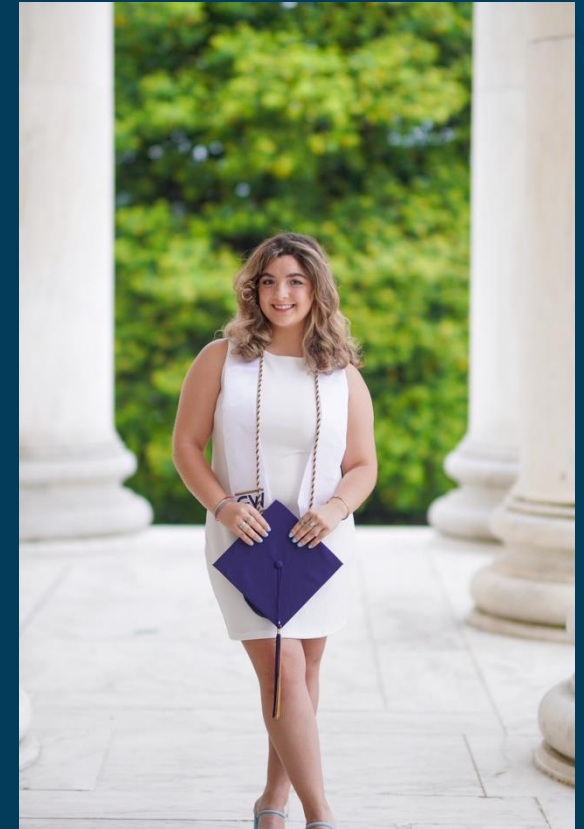
Honey W. Nashman Center  
for Civic Engagement  
and Public Service

**MARCH 28, 2025**



# ABOUT ME

- I recently graduated from the George Washington University in 2024 with a Bachelors in Public Health and minor in Biology
- I am in my last semester of my MPH
- I plan to attend medical school and hopefully specialize in OBGYN care



Honey W. Nashman Center  
for Civic Engagement  
and Public Service

NASHMAN CIVIC  
**SPOTLiGHTS**

# PROGRAM

Knapp Fellowship for Entrepreneurial Service-Learning: selected students are given the opportunity to implement entrepreneurial service-learning projects that make a significant difference in the lives of others

I developed TRANS-CARE with the scholarship provided through the Knapp fellowship.



Honey W. Nashman Center  
for Civic Engagement  
and Public Service

NASHMAN CIVIC  
**SPOTLiGHTS**

# CONTEXT

- Transgender individuals face numerous challenges in accessing quality healthcare
- Transgender men are 56% less likely to receive routine cervical cancer screening (CCS) compared to cisgender women, which increases their risk for late diagnoses and mortality from cervical cancer
- **This project aims to use a community-engaged approach to develop and evaluate a web-based campaign to increase CCS awareness and practices among TM**



Honey W. Nashman Center  
for Civic Engagement  
and Public Service

NASHMAN CIVIC  
**SPOTLiGHTS**

# ACTION



- **My proposed plan:**
  - Administer a survey to transgender men and nonbinary communities with a cervix
  - Interview 4 to 6 healthcare providers, case managers, and researchers
- Unfortunately, there had to be a change in my program
  - Why? The current political climate caused increased stress among my target population
- To adapt to the changing political environment, I met with subject experts and they advised me to focus my study on healthcare providers and interview a few transmen/nonbinary individuals



Honey W. Nashman Center  
for Civic Engagement  
and Public Service

NASHMAN CIVIC  
**SPOTLiGHTS**



# COMMUNITY IMPACT

- I am still conducting interviews with transgender men, nonbinary populations, and providers
- I am working with a community-based consulting group that specializes in engaging historically marginalized communities in web-based research and health interventions



**Goal: create a tool kit for providers and TM**



Honey W. Nashman Center  
for Civic Engagement  
and Public Service

NASHMAN CIVIC  
**SPOTLiGHTS**

# REFLECTION



- First-time research experience required navigating unfamiliar protocols
  - Creating an IRB, developing appropriate questions, conducting 40-60 minute interviews
- Adapted to evolving policies while maintaining an affirming environment for transgender male participants
- Developed skills in creating safe spaces
- Gained deeper understanding of the importance of researcher flexibility when working with marginalized communities
- Recognized community-engaged work as a collaborative process requiring ongoing learning



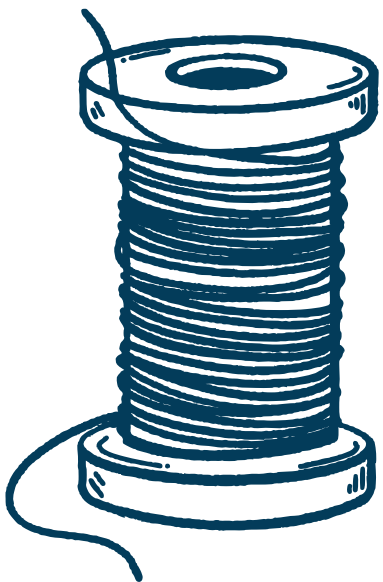
Honey W. Nashman Center  
for Civic Engagement  
and Public Service

NASHMAN CIVIC  
**SPOTLiGHTS**

# THANK YOU!



Honey W. Nashman Center  
for Civic Engagement  
and Public Service



# NASHMAN CIVIC **SPOTLiGHTS**

## **Sewup!** **Sustainable Clothing** **Practices**



Honey W. Nashman Center  
for Civic Engagement  
and Public Service

**MARCH 28, 2025**



# ABOUT ME



Honey W. Nashman Center  
for Civic Engagement  
and Public Service

NASHMAN CIVIC  
**SPOTLIGHTS**

## PROGRAM: GWUPSTART (ECO-EQUITY)

- Creative approach to climate justice issues
- Building community partnerships
- Awareness within the GW community about environmental or climate justice



Honey W. Nashman Center  
for Civic Engagement  
and Public Service

NASHMAN CIVIC  
**SPOTLiGHTS**



# ENVIRONMENTAL CONTEXT

- 92 million tons of waste a year
- 10% of global emissions
- 79 billion cubic meters of water per year

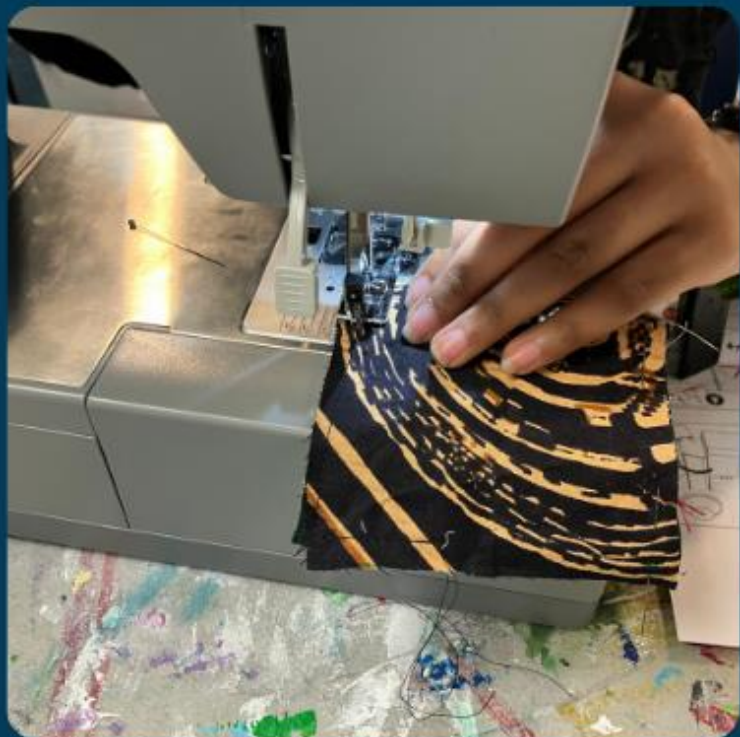
DC has a higher rate of textile waste

- Sustainable brands are too expensive
- Lack of 2<sup>nd</sup> hand clothing options



Honey W. Nashman Center  
for Civic Engagement  
and Public Service

NASHMAN CIVIC  
**SPOTLiGHTS**



Student making their pincushion!!

## MY PROJECT

Establish a sewing space at LAYC

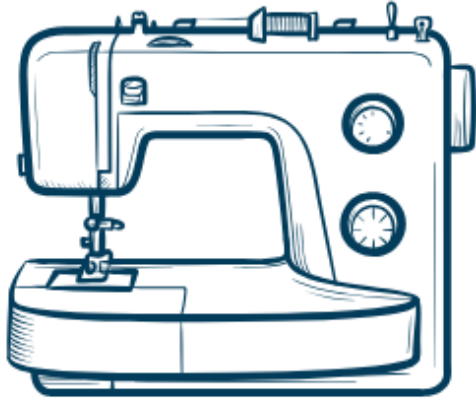
10-part workshop series at LAYC:

- Understand the environmental and human cost of fashion
- Learn how to upcycle





# CLASS



Supplies and lessons



Student  
knowledge &  
expertise



Attendance and  
engagement



Student inspiration



Honey W. Nashman Center  
for Civic Engagement  
and Public Service

NASHMAN CIVIC  
**SPOTLiGHTS**

# COMMUNITY IMPACT



## Ongoing Accomplishments

- Clothing drive
- Community clothing swap
- Student interest

## Final evaluation in May

- Post-tests
- Class discussion
- Final fashion show & artist statements



Honey W. Nashman Center  
for Civic Engagement  
and Public Service

NASHMAN CIVIC  
**SPOTLiGHTS**



# REFLECTION



## Takeaways

- Teaching
- Activism
- Art

## Future Goals

- Continued program in fall
- All genders!!
- Expanded program



Honey W. Nashman Center  
for Civic Engagement  
and Public Service

NASHMAN CIVIC  
**SPOTLiGHTS**

# THANK YOU!



Honey W. Nashman Center  
for Civic Engagement  
and Public Service



# NASHMAN CIVIC **SPOTLiGHTS**

PROJECTS FOR PEACE  
"NOT JUST A NUMBER"



Honey W. Nashman Center  
for Civic Engagement  
and Public Service

**MARCH 28, 2025**



# ABOUT US



Nataliya Layer



Anja Ree



Lydia Miller



Liana Moldovanu



Honey W. Nashman Center  
for Civic Engagement  
and Public Service

NASHMAN CIVIC  
**SPOTLiGHTS**

# PROGRAM

- Became Recipients of Projects for Peace Grant for 2023-2024 School Year with podcast and refugee collection idea
- Added research aspect in the Spring
- Conducted literature review in Spring
- Coordinated with 45+ organizations and interviewed 40+ refugees in 4 different countries



Honey W. Nashman Center  
for Civic Engagement  
and Public Service

NASHMAN CIVIC  
**SPOTLiGHTS**

## LOCATIONS

- RZESZOW, POLAND
- KRAKOW, POLAND
- PRZEMYSL, POLAND
- WARSAW, POLAND
- TALLINN, ESTONIA
- CHISINAU, MOLDOVA
- IASI, ROMANIA
- SUCEAVA, ROMANIA





# 3 AVENUES OF ADVOCACY



Creating a podcast where each episode focuses on a different organization



Creating a website that contains biography pages about each organization and refugee stories



Writing a research paper on adaptability of NGOs in the face of declining funding.



Honey W. Nashman Center  
for Civic Engagement  
and Public Service

NASHMAN CIVIC  
**SPOTLiGHTS**

# MEMORABLE ORGANIZATIONS



VShkolu



Mondo



RCTV Memoria



Ednae



Honey W. Nashman Center  
for Civic Engagement  
and Public Service

NASHMAN CIVIC  
**SPOTLiGHTS**

## COMMUNITY IMPACT

"They [International Organizations] come and organize these posh meetings in the center of the city ... everything is artificial. You go into these posh places... and you speak to some American lady who doesn't know what you do but she's a board member of some organization so you are never speaking on equal ground... I don't know all of these procedures like the Response Plan. I know what kind of problems were facing here in Poland... They [international organizations] fulfill their plan of supporting local organizations with this [set] amount of money and then leave and do something else"



Honey W. Nashman Center  
for Civic Engagement  
and Public Service

NASHMAN CIVIC  
**SPOTLiGHTS**



## REFLECTION

- Made us realize the scale of work done by grassroots organizations and the importance of partnerships between grassroots and international organizations.
- Made us realize the importance of donating directly to grassroots organizations and the need to raise awareness about them.
- Ensured that we are promoting both the stories of Ukrainian refugees and the important organizations supporting them.



Honey W. Nashman Center  
for Civic Engagement  
and Public Service

NASHMAN CIVIC  
**SPOTLIGHTS**



School of Medicine  
& Health Sciences

# NASHMAN CIVIC **SPOTLiGHTS**

**GW DPT PROGRAM**



Honey W. Nashman Center  
for Civic Engagement  
and Public Service

**MARCH 28, 2025**



# ABOUT US



The George Washington University (GWU) Physical Therapy Student Organization (PTSO) was established to provide a mechanism for students of the Doctor of Physical Therapy (DPT) program to interact, fundraise, and serve the George Washington University community. Additionally, this organization provides an opportunity for collaboration between representatives from each class within the DPT program, as well as between the DPT program, GWU, and its community.



Honey W. Nashman Center  
for Civic Engagement  
and Public Service

NASHMAN CIVIC  
**SPOTLiGHTS**



# COMMUNITY OF HOPE



Community of Hope's mission is to improve health and end family homelessness to make Washington, DC more equitable.

As part of our community engagement, we participate with Community of Hope to host birthday parties where we engage with the kids, play games, and celebrate a special day with them.



Honey W. Nashman Center  
for Civic Engagement  
and Public Service

NASHMAN CIVIC  
**SPOTLiGHTS**

# APTA - FOOT CLINIC

This initiative focuses on providing essential foot screenings and education to prevent complications from peripheral neuropathy secondary to diabetes and other foot conditions. Through personalized care and community outreach, the clinic and screening empower individuals to recognize early warning signs, adopt preventive measures, and maintain foot health.

By addressing disparities in access to care, this program fosters better outcomes and highlights the university's commitment to health equity and community well-being.



Honey W. Nashman Center  
for Civic Engagement  
and Public Service

NASHMAN CIVIC  
**SPOTLiGHTS**

# ACTION



## Community of Hope Birthdays

- PT students designed a party, gathered material, made decorations and individualized birthday cards for each kid
- Set up and took down event
- Played, engaged and celebrated with the children
- One party was in January (and the second is schedule for May!)



## Foot Clinic

- Challenges included representatives at APTA changing and a decision to change focus of the representatives time
- Determining the date and completing marketing to get sign ups will continue to be steps that need to be taken through the spring and summer



Honey W. Nashman Center  
for Civic Engagement  
and Public Service

NASHMAN CIVIC  
**SPOTLiGHTS**



# COMMUNITY IMPACT

What impact has your work/project had?

- “Every time we go to Community of Hope we have such a blast! The kids genuinely love playing with us and always have such a great energy that inspires me.” - January Volunteer
- “Without the help of volunteers, it would be an overwhelming amount of work for staff members to organize a safe space several times a week for play and community events. We are more than happy to help and seeing the kids full of joy makes the trip out worth it!” - June Volunteer



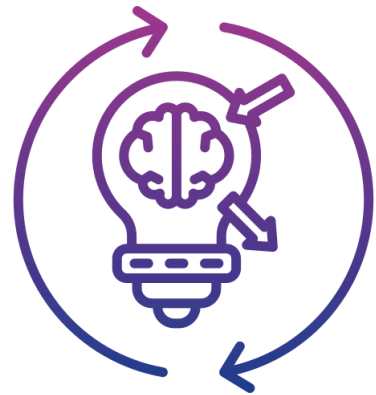
Honey W. Nashman Center  
for Civic Engagement  
and Public Service

NASHMAN CIVIC  
**SPOTLiGHTS**

# REFLECTION



Engaging with our community through organizations like Community of Hope and the foot clinic shows us the importance of building meaningful connections with the DC community. Building a sense of trust and sense of belonging through hosting birthday parties and health screenings has allowed us to improve the well-being of our surrounding communities and connect in a meaningful way.



Honey W. Nashman Center  
for Civic Engagement  
and Public Service

NASHMAN CIVIC  
**SPOTLiGHTS**

# THANK YOU!



Honey W. Nashman Center  
for Civic Engagement  
and Public Service