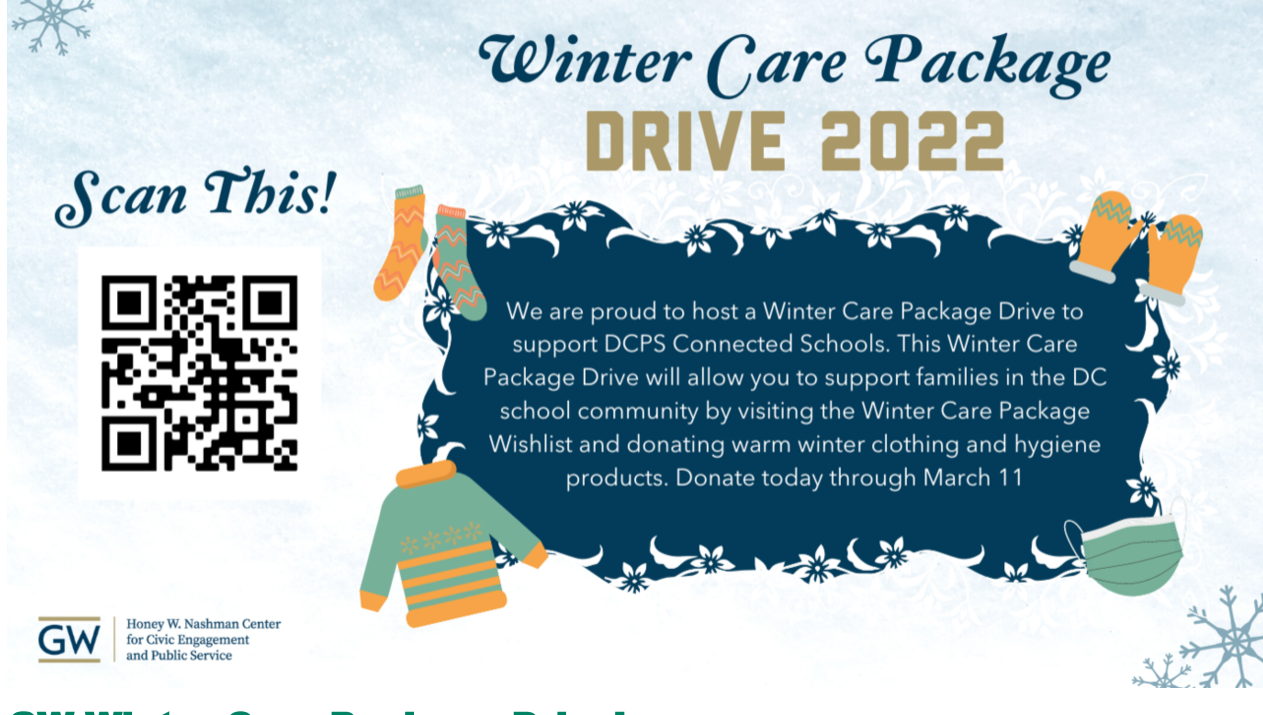




HONEY W. NASHMAN CENTER FOR CIVIC ENGAGEMENT AND PUBLIC SERVICE

“When the whole world is silent, even one voice becomes powerful.” - Malala Yousafzai



GW Winter Care Package Drive!
Support our cause! ❤️ Support families in the DC school community by visiting the wishlist and donating warm winter clothing and hygiene products. [Donate through March 11!](#)

NASHMAN OPPORTUNITIES

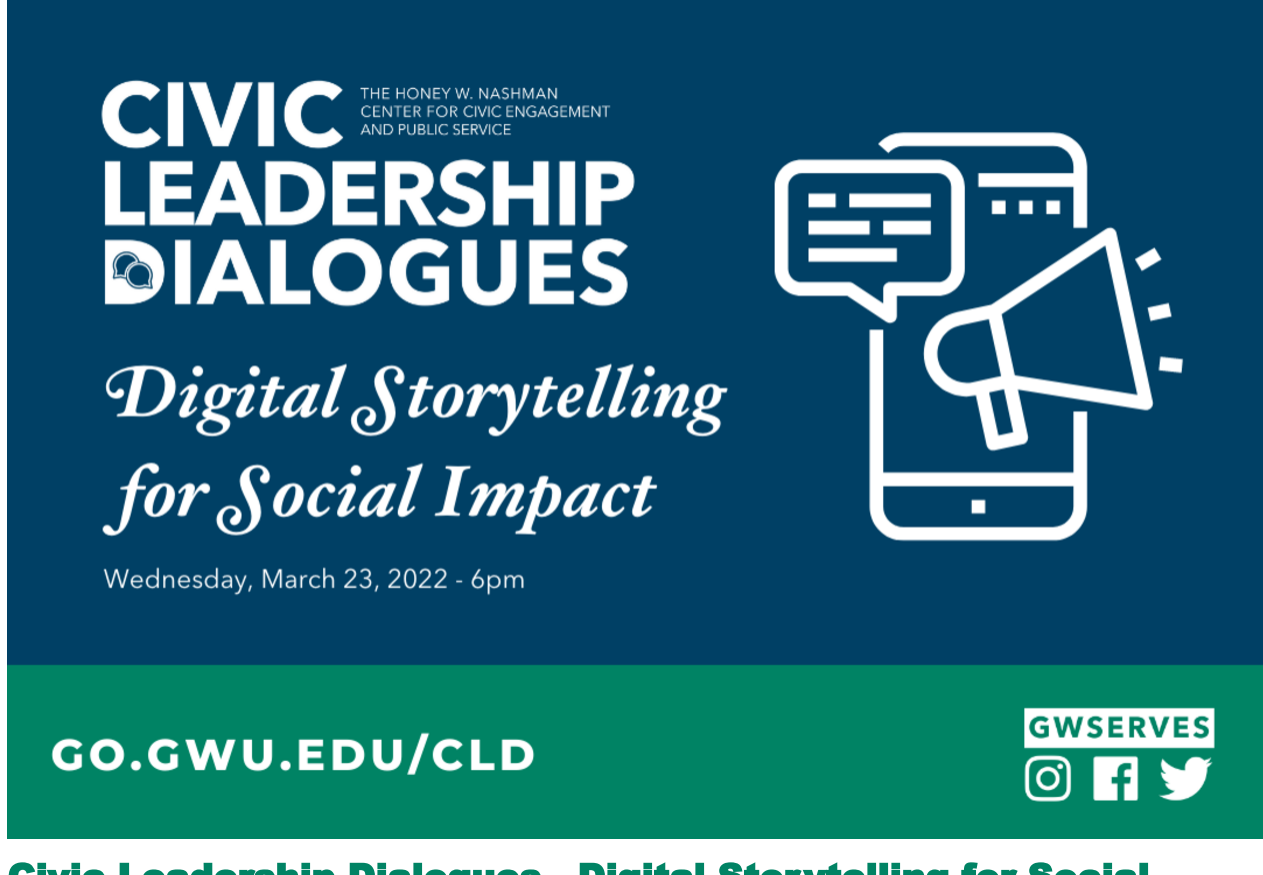


Public Service Grant Commission
Are you passionate about innovation and want to carry out feasible community service programs and ideas? [The Public Service Grant Commission](#) is our social innovation fund supporting GW students' passions to make change.

Grants provide funding for GW students' ideas to deliver solutions through projects with DC area partner organizations **ranging from \$500 – \$2500 per individual/group project, per deadline.**

Deadline: Mar 22

We are holding workshops and information sessions to help students with the applications. You can learn [more here](#). Question? [Email!](#)



Civic Leadership Dialogues - Digital Storytelling for Social Impact

Wednesday, March 23, 2022 – 6pm (ET)

As leaders involved in community engagement it is important to understand the power of storytelling to educate and inspire people. Join us as we discuss insights and ideas from storytellers and thought leaders from different fields and apply these best practices to community engagement. [Join here!](#)

Become a Math Matters VISTA!



APPLY TO THIS 1-YEAR OPPORTUNITY NOW!

GW Math Matters Tutors provide quality on-site and/or virtual, one-on-one or group tutoring for middle school students in Washington, DC. The VISTA will increase the capacity of the Math Matters tutoring program by conducting research, program evaluation, and outreach to stakeholders! It's open to all graduating seniors and grad students!

The Honey W. Nashman Center Prize for Community Engagement in the Arts and Design

Applications Due April 1st

The Nashman Center Prize for Community Engagement in the Arts and Design recognizes George Washington University students who use artistic practice to engage in community relationships aimed at justice, social change, and advocacy. Any student participating in the NEXT Exhibition whose work meets the selection criteria is eligible to apply. [Learn more here!](#)



OUR PODCAST

Listen to Our Stories!

The Nashman Hive shares stories about transformational campus community partnerships that embody the [mission](#) of the Honey W. Nashman Center for Civic Engagement and Public Service. Check out our amazing episodes on [Spotify](#), [Breaker](#), [PocketCasts](#), [Anchor](#) and [Radio Public](#).



CONNECT WITH US!



2300 H St, NW, Suite 400
Washington, DC 20037
(202) 994-9900

SUBSCRIBE

Have a story, opportunity, or event you want to share?

SUBMIT

